

Agenda

FRONTIERS SUGGESTS: Our top picks for the next 14 days

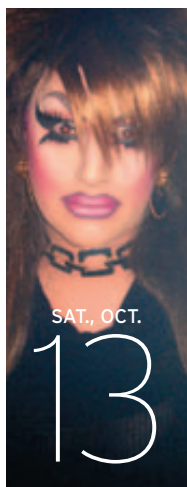


QUALITY ASSURANCE

Roseanne's Laurie Metcalf and *Quantum Leap*'s Scott Bakula star in the Geffen's world premier production of Jane Anderson's new play, *The Quality of Life*. The play concerns a conservative couple who are still reeling from the death of their daughter. Their visit to their liberal cousins' makeshift house in the wake of a fire causes all four of them to question their beliefs. *Audrey Skirball Kenis Theater. Through Sun., Nov 18. 310/208-5454. www.geffenplayhouse.com.*

ROUTE 666

Underground dance party Dragstrip 66 returns after a summer hiatus, and they've found a new home at Safari Sam's. The welcome back should be a humdinger; it's Dragstrip's annual Halloween party, and they'll be celebrating their "Dressed to Kill" theme with the likes of Jackie Beat, Dragstrip-favorite Momma, and performance art from the Nellie Olesons, who are cooking up a tribute to *Silence of the Lambs*. *Safari Sam's. 9 p.m.-2 a.m. \$15, or \$5 all night in costume. 323/969-2596. www.dragstrip66.com.*

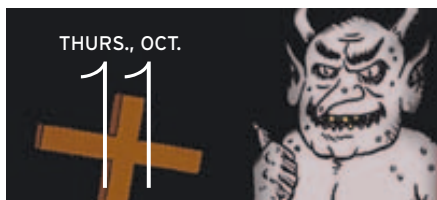


ANDREW SCHNEIDER



EAGLES AND CHICKS

The Eagles and the Dixie Chicks—on a double bill—break in the brand-new Nokia Theatre, with six nights of shows. The 7,100 seat theater is poised to become the new downtown destination for almost-stadium-size rock and comedy shows, but the theater is designed so that no seat is more than 210 feet from the stage. *Nokia Theatre. Through Sat., Oct. 27. 8:15 p.m. \$85-265. 213/480-3232. www.nokiatheatrelive.com.*

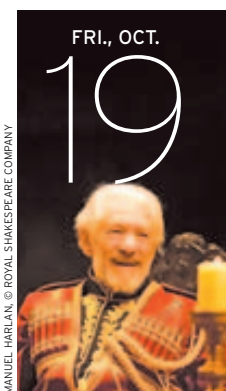


JESUS CLEANS UP HOLLYWOOD

Fundamentalist Christian groups all over the nation stage annual "Hell Houses," where they present horrific if-Jerry-Falwell-ran-a-Grand-Guignol-community-theater depictions of the wages of sin. A couple of years ago, some Hollywood liberals decided they would get an actual church's script and mount a fairly straightforward production right here in Hollywood, complete with celebrities like Bill Maher and Richard Belzer. The most terrifying haunted house in L.A. returns to claim some more souls this Halloween, but for which side remains uncertain. *385 N. La Cienega. Thurs., Fri., and Sat. Through Oct 27. Multiple tours each night. \$25. 323/960-7822. www.hollywoodhellhouse.com.*

BIG GAY BUS RIDE

Author and historian Stuart Timmons leads a bus tour of queer life in Los Angeles over the past century. The tour begins downtown, then moves to Silver Lake to examine mid-20th century gay life in L.A., and ends in West Hollywood, with a focus on the social and political significance of the queer residents in each neighborhood. *The Village at Ed Gould Plaza. 9:30 a.m.-4 p.m. \$95. 310/825-2272. www.uclaextension.edu.*



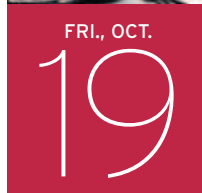
MANUEL HARLAN © ROYAL SHAKESPEARE COMPANY

ROYAL TREATMENT

The Royal Shakespeare Company brings its acclaimed production of *King Lear* starring Sir Ian McKellen to UCLA's Royce Hall. Lear runs alongside Chekov's *The Seagull*, in which McKellen will be performing for some dates as well. *Royce Hall. Through Sun., Oct. 28. \$40-90. 310/825-2101. www.uclalife.org.*

THIS IS HALLOWEEN

Jack Skellington returns to try and commandeer Christmas again, this year in stunning digital 3-D. Tim Burton's stop motion musical *The Nightmare Before Christmas* was already eye-popping, but at the El Capitan, the eyes actually seem like they might land in your lap. *El Capitan Theatre. Through Sun., Nov. 18. Various times. \$13-22. 800/DISNEY6. www.disney.go.com/disneypictures/nightmare/.*

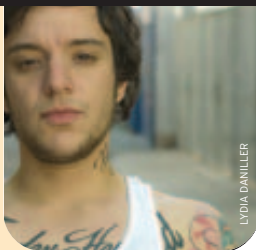


> HOMO MUST



WHERE HOMOHOPE MEETS QUEERCORE

Homosaic celebrates its first anniversary this year. The music festival's lineup includes Girl in a Coma (recently signed by Joan Jett to her record label), trans hip-hopper Katastrophe, all-girl punk-popsters Maxitit, and L.A.'s own electro-pop duo Swivel. *Dragonfly. 8 p.m. \$20 (\$15 in advance). 323/860-7300. www.lagaycenter.org/boxoffice.*



COMPILED BY MATTHEW C. POE

Send your submissions to agenda@frontierspublishing.com.

93 **FILM**

98 **MUSIC**

101 **PERFORMING ARTS**

106 **BOOKS**

109 **DINING**

112 **NIGHTLIFE**

LIMITED RUN

FOR THE BIBLE TELLS ME SO

Examines the political implications and personal realities of scriptural interpretations of homosexuality. Director Daniel Karslake will present the film in person for both screenings on Fri., Oct. 12. NuArt. Fri., Oct. 12. 7:30 and 10 p.m. Continues though Thurs., Oct. 18. \$10. 310/281-8223. www.landmarktheatres.com.

IF YOU LOVE THIS PLANET AND JUST ANOTHER MISSING KID

Continues the Academy's comprehensive screening series of Oscar-winning documentaries, with 1982's statue-winners. The films deal with weapons of mass destruction and a family's quest to find a missing teen after police have failed, respectively. *Linwood Dunn Theater*. Mon., Oct. 15. 7:30 p.m. \$5. 310/247-3600. www.oscars.org/events/.

RESERVATION ROAD

Follows director Terry George's much-acclaimed *Hotel Rwanda* with a family drama about the emotional wake of a hit and run accident. Screened as a part of Stephen Farber's "Reel Talk" series; screenwriter John Burnham will be on hand. *Wadsworth Theatre*. Mon., Oct., 15. 7 p.m. \$20. 310/479-3003. www.landmarktheatres.com.

L.A. ANIMATION FEST

Is "by animators, for animators," but Hollywood's first animation festival in six years features lots of films of interest to animation fans, as well. *Silent Movie Theatre*. Sat.-Sun., Oct. 20-21. Various times and programs. \$6-10 per screening. www.laafest.org.

> HOMO MUST

XANADU

Must be the gayest musical ever made: Olivia Newton John and ELO! Roller skates! Disco! Come for the costume contest, and don't be shy about singing along. *Warner Grand*. Sat., Oct. 20. 8 p.m. \$15. 310/548-7672. www.warnergrand.org.

CONCERT CALENDAR

BEIRUT

Despite hailing from Santa Fe, play Balkan gypsy-inspired indie folk. They tour in support of their new release, *The Flying Club Cup*. Avalon Hollywood. Wed.-Thurs, Oct. 10-11. 9 p.m. \$22. 323/462-8900. www.livenation.com.

DEVENDRA BANHART

Claims not to like the label "freak folk," but if there's a better term for this inventive young songwriter's genre, we haven't heard it. *Orpheum*. Sat., Oct. 13. 9 p.m. \$30. 213/480-3232. www.laorpheum.com.

BELA FLECK & THE FLECKTONES

Took home a third Grammy this year for their album *Hidden Land*, and will bring their bluegrass inflected jazz (or is it jazz inflected bluegrass?) to the Henry Fonda. *Henry Fonda*. Thu., Oct. 11. 9 p.m. \$28. 323/464-0808. www.henryfondatheater.com.

DUNCAN SHEIK

Won a Tony this year for his score for the musical *Spring Awakening*, but we still hope he plays "Barely Breathing." *El Rey Theatre*. Sun., Oct. 14. 8 p.m. \$22. 213/480-3232. www.theelrey.com.



PJ HARVEY

Brings her crazy to the keyboard, for a change. She comes to town in support of her new album of piano-centric songs, called *White Chalk*. *Orpheum*. Mon., Oct. 15. 9 p.m. \$49.50-55. 213/480-3232. www.laorpheum.com.

PATRICK WOLF

Packs his considerable talent as a songwriter and multi-instrumentalist into one pretty, pansexual package. *El Rey Theatre*. Tues., Oct. 16. 9 p.m. \$19. 213/480-3232. www.theelrey.com.

> HOMO MUST

INTERPOL

Became a major-label act with their recently released third album, *Our Love to Admire*, and, like PJ Harvey, they're busting out the keyboards for it. Will success spoil the post-punks? *The Forum*. Tues., Oct. 23. 8 p.m. \$30.50-32.50. 213/480-3232. www.ticketmaster.com.

LIMITED RUN

POINT BREAK LIVE!

Brings the 1992 action film to the stage in a tongue-in-cheek way. Each night, an audience member is chosen at random to portray Keanu Reeves' character, aided by cue cards.

Charlie O's at the Alexandria Hotel. Opens Fri., Oct. 12. Open run. \$20. 866/811-4111. www.myspace.com/pointbreaklive.

SHELDON & MRS. LEVINE

Features Penny Marshall as a domineering mother, whose interference in her 31-year-old son's life ruined his marriage, in a dysfunctional family comedy.

Falcon Theatre. Previews from Wed., Oct. 17. Through Sun., Nov. 18. \$25-37.50. 818/955-8001. www.falcontheatre.com.

LITTLE FISH

Gets a stylish West Coast debut at the Blank; this production of the new musical from *Wild Party* composer Michael John LaChiusa brings Alice Ripley and other Broadway vets into an intimate venue. *Blank Theatre Company. Through Sun., Nov. 18. \$32-38. 323/661-9827.*

www.theblank.com.

THE FORTUNE TELLER

Claims to meld Edward Gorey and Tim Burton in this "perverse, but gleeful morality tale for grown-ups." Danny Elfman wrote an original score for Erik Sanko's grim puppet show for adults. *Freud Playhouse. Opens Thurs., Oct. 18. Through Sun., Oct. 28. \$32. 310/825-2101. www.uclalive.org.*

> HOMO MUST

DARK PLAY OR STORIES FOR BOYS

Explores "deception, fluid personality, and sexual license in the chat rooms of the World Wide Web," in the play's West Coast premiere. *Boston Court Theatre. Opens Sat., Oct. 13. 8 p.m. Through Sun., Nov. 18. \$30. 626/683-6883. www.bostoncourt.com.*

LIMITED RUN

LAWRENCE WESCHLER

Discusses his latest book, *Everything That Rises*, and more with BLDGBLOG's editor, Geoff Manaugh. *Hammer Museum*. Wed., Oct. 10. 7 p.m. 310/443-7000. www.hammer.ucla.edu.

THE INTERLOPER

Concerns the brother-in-law of a murder victim, who, having decided prison is not punishment enough, sets about to seduce the murderer with fictionalized letters in order to break his heart, in Antoine Wilson's debut novel. Wilson presents and signs. *Skylight Books*. Fri., Oct. 12. 7:30 p.m. 323/660-1175. www.skylight-books.com.

SUSAN FALUDI

Discusses fears and fantasies in America post-9/11 with *Los Angeles* magazine editor Kit Rachlis. *Central Library*. Tues., Oct. 16. 7 p.m. 213/228-7025. www.aloudla.org.

THE KITE RUNNER

Adapts the internationally bestselling novel into a film; screened as a part of Stephen Farber's "Reel Talk" series. The film's producers and the film's star, Shaun Toub, will be on hand. *Wadsworth Theatre*. Mon., Oct., 22. 7 p.m. \$20. 310/479-3003. www.landmarktheatres.com.

> HOMO MUST

EDMUND WHITE

Discusses his latest book, *Hotel de Dream*, about a possibly apocryphal gay romantic relationship *The Red Badge of Courage* author Stephen Crane may have had. White has described the book as "a fantasia on real themes provided by history." *Central Library*. Mon., Oct. 22. 7 p.m. 213/228-7025. www.aloudla.org.